

TERRYTECS BLU FILTER

www.youtube.com/@TERRYTECS-MEDIA

ONE-SIZE

DRAINAGE UP TO Ø 200 CM
30x30 → 40x60 CM

DRAINAGE WELL WITH
DEPTHS >15 CM

TWO FILTERS CAN BE MOUNTED
TO INCREASE CAPACITY

<60 SECONDS TO MOUNT THE
FILTER

STEER THE FLOW WITH
TERRYTECS YELLOW



>99% OF THE PRODUCT CONSISTS OF
ABSORBING & FILTRATING MATERIAL

8 LITER FILTERMEDIA FOR

- AROMATHICS, ALIPHATES,
PETROLEUM
- PFAS
- HEAVY METALS
- BACTERIA
- MICROPLASTICS

UP TO 99% PURIFICATION
EFFECT

CAPACITY OF >10 CBM
EXTINGUISHING WATER PER
FILTER*

* DEPENDS ON LEVEL OF CONTAMINATION

TERRYTECS BLU FILTER

www.youtube.com/@TERRYTECS-MEDIA

TERRYTECS BLU

- Filter media 4 L
- Absorbent/membrane filter 4 L

Degree of purification 70-99%

Capacity >10 cbm

MEMBRANE FILTER

4 L Terrytecs Absorbent, for non-polar compounds

Pore size down to 0,1 mm

FILTER MEDIA

2 L ion-exchanger heavy metals

2 L ion-exchanger PFAS

FILTERDESIGN



PACKAGING



Weight: 3 kg

Volume: 10 L

Dimensions: 42x28x8 cm

TERRYTECS BLU FILTER - DEGREE OF PURIFICATION

HYDROCARBONS

HYDROCARBONS AS AROMATHICS,
ALIPHATES AND PETROLEUM PRODUCTS

UP TO 99% DEGREE OF PURIFICATION

	Before filtration	TERRYTECS BLU	Unit %	gram/liter
Filtration of extinguishing water				
Benzene	0,0005 <	0,0005	0,0%	milli
Toluene	0,0010 <	0,001	0,0%	milli
Ethylbenzene	0,0010 <	0,001	0,0%	milli
M/P/O Xylene	0,0010 <	0,001	0,0%	milli
sum Tex	0,0020 <	0,002	0,0%	milli
Alithics >C5-C8	0,0200 <	0,020	0,0%	milli
Aliphatics >C8-C10	0,0200 <	0,020	0,0%	milli
Aliphatics >C10-C12	1,2000 <	0,010	-99,2%	milli
Sum Aliphatics >C5-C12	1,2000 <	0,020	-98,3%	milli
Aliphatics >C12-C16	33,0000	0,270	-99,2%	milli
Aliphatics >C16-35	46,0000	0,460	-99,0%	milli
Sum Aliphatics >C12-C35	79,0000	0,730	-99,1%	milli
Aromatics >C8-C10	0,0100 <	0,010	0,0%	milli
Aromatics >C10-C16	75,0000 <	1,000	-98,7%	μ
Aromatics >C16-C35	4,6000 <	0,500	-89,1%	μ
Mehtylchrysene/benzo(a)anthracenes	0,6300 <	0,500	-20,6%	μ
Methylpyrene/flouranthene	4,0000 <	0,500	-87,5%	μ
Benz(a)anthracene	0,8200	0,010	-98,8%	μ
Chrysene	0,4900 <	0,010	-98,0%	μ
Benzo(b,k)fluoranthene	1,0000	0,029	-97,1%	μ
Benzo(a)pyrene	1,3000	0,027	-97,9%	μ
Indeno(1,2,3-cd)pyrene	0,4100	0,014	-96,6%	μ
Dibenz(a,h)anthracene	0,0300 <	0,010	-66,7%	μ
Naphthalene	0,1000 <	0,010	-90,0%	μ
Acenaphtylene	0,7300 <	0,010	-98,6%	μ
Acenaphtene	1,9000 <	0,010	-99,5%	μ
Fluorene	0,2300 <	0,010	-95,7%	μ
Phenanthrene	0,8500 <	0,010	-98,8%	μ
Antracene	0,5700 <	0,010	-98,2%	μ
Fluorantene	3,9000	0,043	-98,9%	μ
Pyrene	5,5000	0,075	-98,6%	μ
Benzo(g,h,i)perylene	0,7600	0,019	-97,5%	μ
Sum carcinogenic PAH	4,1000	0,09	-97,8%	μ
Sum other PAH	14,0000	0,17	-98,8%	μ
Sum PAH w low molecule weight	2,7000 <	0,015	-99,4%	μ
Sum PAH w mid-high molecule weight	11,0000	0,13	-98,8%	μ
Sum PAH w high molecule weight	4,9000 <	0,11	-97,8%	μ

TERRYTECS BLU FILTER – DEGREE OF PURIFICATION

PFAS

PFAS/PFOS

UP TO 96% DEGREE OF PURIFICATION

PFAS 4: 370 → 13 ng/L (-96,5%)

PFAS 21: 1300 → 42 ng/L (-96,8%)

Filtration of extinguishing water		Before filtration	TERRYTECS BLU	%
P F A S	PFBA	52	< 20,0	-61,5%
	PFPeA	320	8,7	-97,3%
	PFHxA	140	6,20	-95,6%
	PFHpA	68	2,70	-96,0%
	PFOA	42	1,90	-95,5%
	PFNA	12	0,48	-96,0%
	PFDA	^ 10	0,31	-96,9%
	PFUdA	^ 10	< 0,30	-97,0%
	PFDoA	^ 10	< 0,30	-97,0%
	PFBS	^ 10	< 0,30	-97,0%
	PFHxS	80	2,40	-97,0%
	PFHpS	^ 10	< 0,30	-97,0%
	PFOS	240	8,60	-96,4%
	PFDS	^ 10	< 0,30	-97,0%
	6:2 FTS	320	11,00	-96,6%
	PFTTrDA	^ 10	< 1,00	-90,0%
	PFDoS	^ 10	< 1,00	-90,0%
	PFNS	^ 10	< 0,30	-97,0%
	PFPeS	^ 10	< 0,30	-97,0%
	PFTTrDS	^ 10	< 0,30	-97,0%
	PFUnDS	^ 10	< 0,30	-97,0%
Sum PFAS4 (EU EFSA)		370	13,0	-96,5%
Sum PFAS21 (LIVSFS 2022:12)		1 300	42,0	-96,8%

TERRYTECS BLU FILTER – DEGREE OF PURIFICATION

HEAVY METALS

Relatively low levels in the tested extinguishing water from MSB Revingehed but effective purification with TERRYTECS BLU FILTER

	Filtration of extinguishing water	Before filtration	TERRYTECS BLU	%	Unit gram/liter
H	Arsenic As	9,6	7,9	-18%	μ
E	Barium Ba	100	2	-98%	μ
A	Lead Pb	1,9	0,5	-74%	μ
V	Cadmium Cd	0,4	0,1	-75%	μ
Y	Cobalt Co	5,2	2,5	-52%	μ
M	Copper Cu	120	92	-23%	μ
E	Chrome (Cr)	110	35	-68%	μ
T	Nickel Ni	69	48	-30%	μ
A	Vanadium V	20	22	10%	μ
L	Zinc Sn	150	55	-63%	μ
S					

TERRYTECS BLU FILTER - CAPACITY

Filter media	Contamination	Filter media (liter)	Filter media (gram)	Filter media effectiveness	Filter media effectiveness with 1:10 safety factor	Amount contaminations to be absorbed with safety factor (gram)	Level of contamination in extinguishing water (µg/L)	Volume capacity purification of extinguishing water (cbm)
Terrytecs absorbent	oil, PAH	4.0	600	12.5%	1.25%	7.5	300	25
Ion-exchanger metals	heavy metals	2.5	1 600	12.5%	1.25%	20.0	2 000	10
Ion-exchnager PFAS	PFAS/PFOS	1.5	800	12.5%	1.25%	10.0	0.50	20 000
Analyzed levels in extinguishing water								
Contamination		Site	Concentration	Unit				
PFAS		Gothenburg	0.5	µg/L				
PFAS		Revingehed	1.3	µg/L				
Heavy metals		Gothenburg	2 000	µg/L				
Heavy metals		Revingehed	500	µg/L				
Petroleum products, PAH		Revingehed	300	µg/L				
Petroleum products, PAH		Åland	50.0	µg/L				
PAH		Gothenburg	15.0	µg/L				

TERRYTECS BLU FILTER INSTRUCTION

www.youtube.com/@TERRYTECS-MEDIA



**OPEN THE MANHOLE COVER
CLEAN THE RING FROM
GARBAGE**



**UNFOLD THE TERRYTECS
BLU**



**PLACE THE COVER IN THE
MIDDLE OF TERRYTECS BLU
ADJUST THE STRAPS**



**WRAP TERRYTECS BLU
AROUND THE COVER**



**REASSEMBLY THE COVER+TERRYTECS
BLU AROUND – PUSH THE COVER BACK
IN POSITION**



**SEAL ANY GAPS BETWEEN THE
COVER AND THE FRAME WITH
THE TERRYTECS**

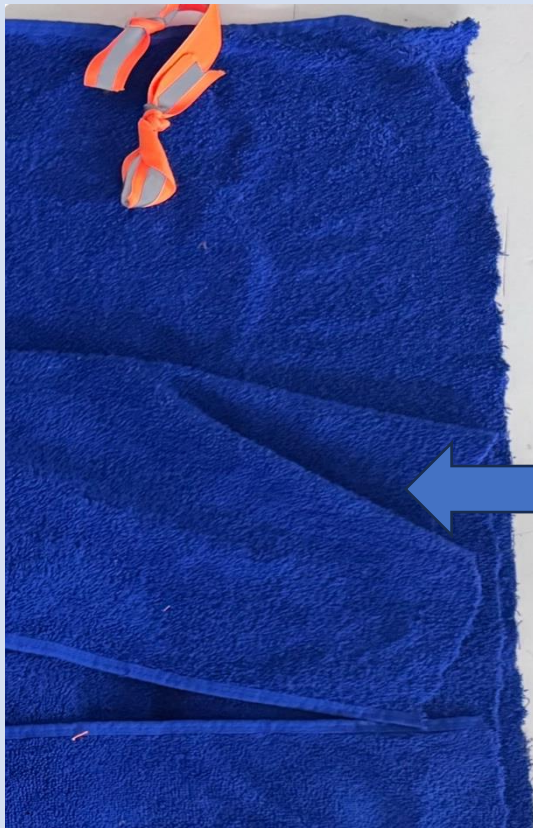


**VERIFY THAT WATER CAN FLOW
FREELY INTO THE COVER AND THE
FILTER AT THE SHORT SIDES**

TERRYTECS BLU FILTER INSTRUCTION

www.youtube.com/@TERRYTECS-MEDIA

**FOR SMALL-SIZE DRAINAGE WELLS, 30x30 CM & TWO FILTERS MOUNTED
FOLD AWAY THE UPPER LAYER WITH TERRYTECS IF TO TIGHT WHEN REASSEMBLY
THE COVER+TERRYTECS BLU**



TWO LAYERS OF TERRYTECS OUTSIDE
THE FILTERMEDIA COMPARTMENT

UPPER LAYER CAN BE FOLD AWAY IF
TO TIGHT WHEN REASSEMBLY THE
COVER+TERRYTECS BLU

